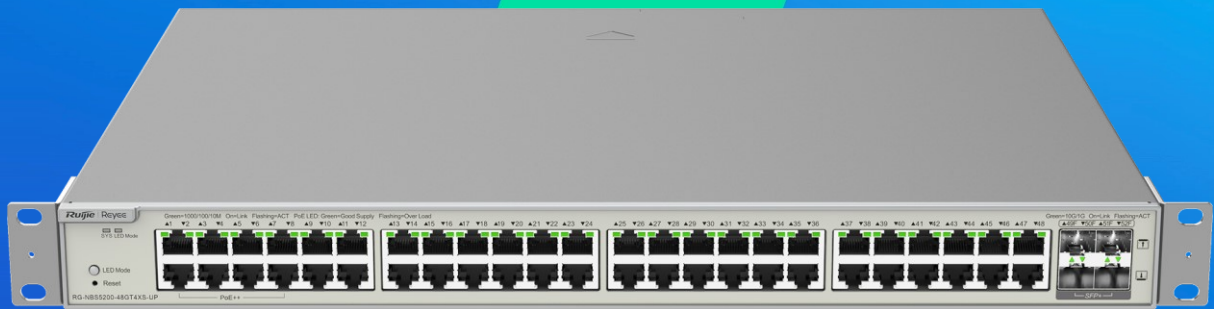


# RG-NBS5200-48GT4XS-UP

## 48-port Gigabit Layer 3 PoE Switch, 4 SFP+ Uplink



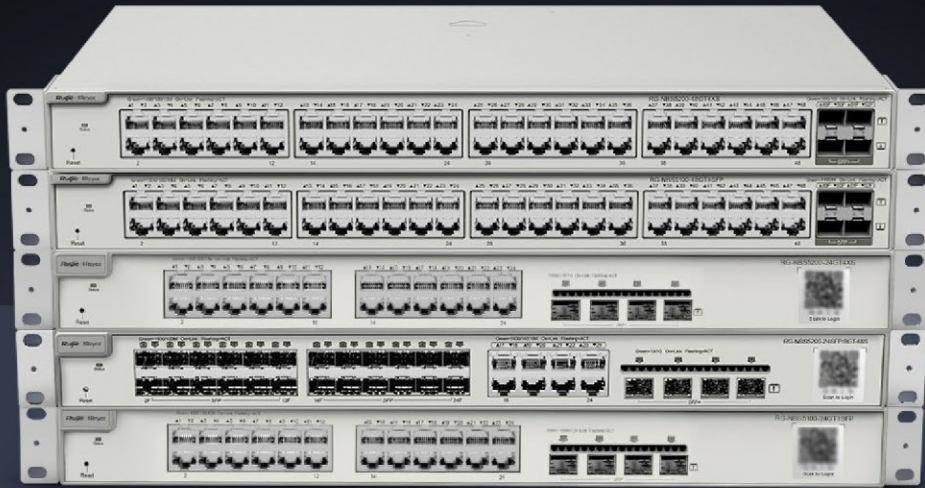
### Highlights

- 48-Port gigabit Layer 3 managed PoE switch, 4 SFP+ uplink
- Enterprise-class Quality Ensures High Performance
- 6KV surge protection reduces the possibility of port damage
- Multiple Security Policies Protect Your Network
- Lifetime management on Ruijie Cloud at anytime anywhere

# Highlight Features


## RG-NBS5000 Series Switch

High performance Layer 3 switch for core/aggregation



 Dynamic Routing

 6kV Surge Protection

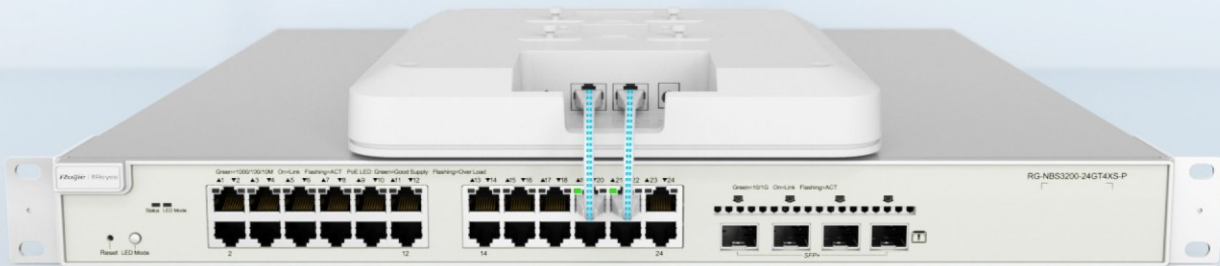
 5 Years Warranty

## Enterprise-class Quality Ensures High Performance

Link Aggregation

IGMP Snooping

VLAN



# Highlight Features

## Enterprise-class Quality Ensures High Performance

Link Aggregation

**IGMP Snooping**

VLAN

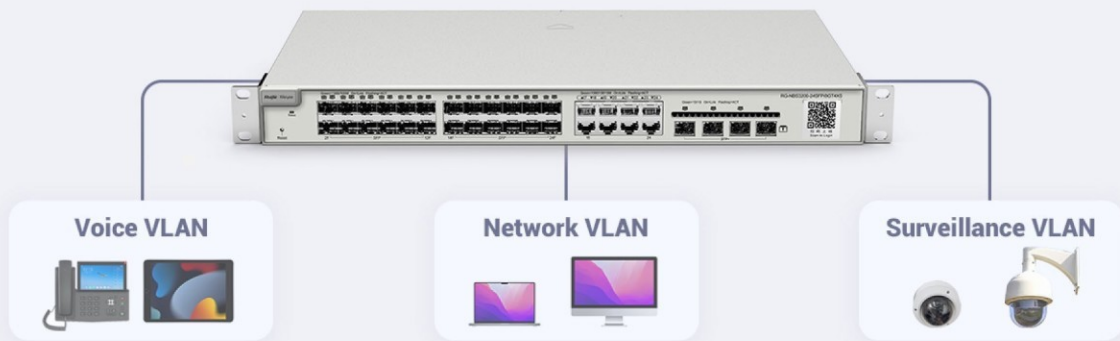


## Enterprise-class Quality Ensures High Performance

Link Aggregation

IGMP Snooping

**VLAN**



# Highlight Features

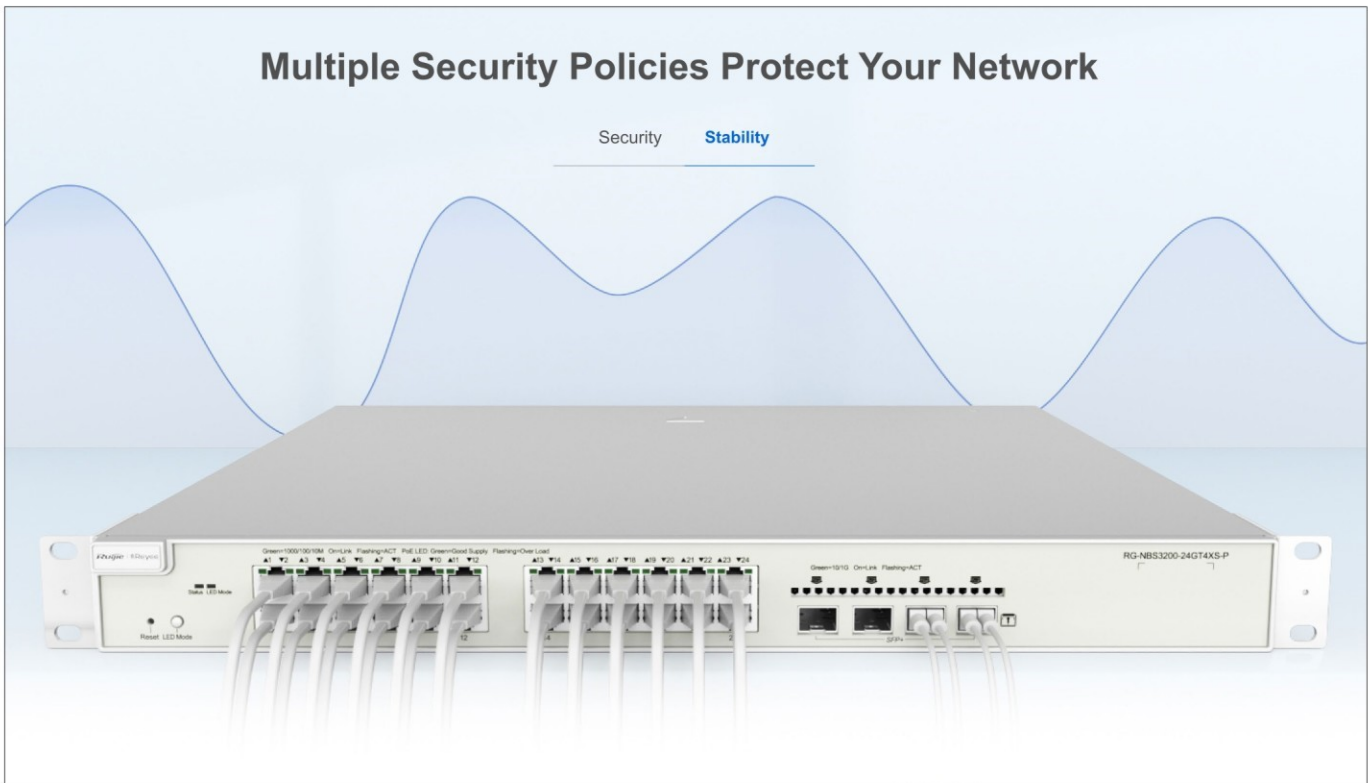
## Multiple Security Policies Protect Your Network

Security Stability



## Multiple Security Policies Protect Your Network

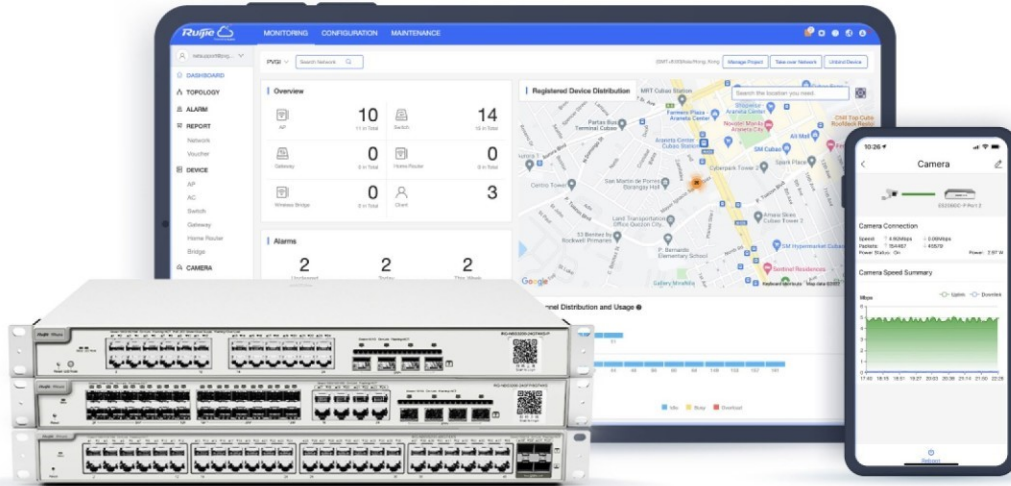
Security Stability



# Highlight Features

## Cloud, Make Your Business Easy

- SON, zero touch provisioning to Cloud
- Monitor switch statistics at anytime anywhere
- Configure VLANs on Ruijie Cloud APP
- Easy maintenance, save onsite time and cost



## Product Information

<b>Model</b>	<b>RG-NBS5200-48GT4XS-UP</b>
<b>Product Category</b>	Layer 3

## Hardware Specifications

<b>Model</b>	<b>RG-NBS5200-48GT4XS-UP</b>
<b>Product Information</b>	
<b>Warranty</b>	5 years
<b>Port Specifications</b>	
<b>Total number of RJ45 ports</b>	48
<b>Total number of optical ports</b>	4
<b>Number of 1GE combo ports</b>	No
<b>Number of 1GE SFP ports</b>	No
<b>Number of 10GE SFP+ ports</b>	4
<b>Number of 10/100BASE-T ports</b>	No
<b>Number of 10/100/1000BASE-T ports</b>	48
<b>Number of 10/100/1000/2500BASE-T ports</b>	No
<b>Number of 100/1000/2.5G/5G/10GBASE-T ports</b>	No
<b>Module slots</b>	No
<b>Reset button</b>	1
<b>DIP switch</b>	No
<b>Power Supply and Consumption</b>	
<b>PoE Out standard</b>	Ports 1–8: PoE/PoE+/PoE++ (IEEE 802.3af/at/bt) Ports 9–48: PoE/PoE+ (IEEE 802.3af/at)
<b>Number of PoE Out ports</b>	48
<b>Number of PoE/PoE+ Out ports</b>	48

# Hardware Specifications

Model	RG-NBS5200-48GT4XS-UP
Number of PoE/PoE+/PoE++ Out ports	8
PoE budget	740 W
PoE power pins	Ports 1-8: 1-2(-), 3-6(+), 4-5(+), 7-8(-); Ports 9-48: 1-2 (+), 3-6 (-)
Power input	220 V AC power supply: <ul style="list-style-type: none"><li>• Rated input voltage: 100 V AC to 240 V AC, 50/60 Hz</li><li>• Maximum input voltage: 90 V AC to 264 V AC, 47 Hz to 63 Hz</li><li>• Maximum input current: 10 A</li></ul>
Maximum power consumption	75.6 W (with no PoE load) 815.6 W (with full PoE load)
Power output	No
Power supply	Fixed power supply
<b>System Specifications</b>	
RAM	512 MB
Flash memory	256 MB
Forwarding rate	132 Mpps
Switching capacity	176 Gbps(bit/s)
<b>Dimensions and Weight</b>	
Casing	Metal
Product dimensions (W x D x H)	440 mm x 357.6 mm x 43.6 mm (17.32 in. x 14.08 in. x 1.72 in.)
Weight	5.64 kg (12.43 lbs) (without packaging materials)
Shipping weight	7.15 kg (15.76 lbs)
<b>Environment and Reliability</b>	
Hot swapping of fan modules	No
Fan	3 x fixed fans
Cooling	Air cooling, side-to-rear airflow
Acoustic noise	25°C (77°F): 60 dB

# Hardware Specifications

Model	RG-NBS5200-48GT4XS-UP
Mounting options	Rack
Hot swapping of cables	Service ports support hot swapping of cables.
MTBF	400,000 hours
Operating temperature	0°C to +50°C (32°F to 122°F)
Storage temperature	-40°C to +70°C (-40°F to +158°F)
Operating humidity	10% RH to 90% RH (non-condensing)
Storage humidity	5% RH to 95% RH (non-condensing)
Altitude	Operating altitude: -500 m to +5,000 m (-1,640.42 ft. to +16,404.20 ft.) Storage altitude: -500 m to +5,000 m (-1,640.42 ft. to +16,404.20 ft.)
Corrosion class	No
ESD protection	Contact discharge: 6 kV Air discharge: 8 kV
Surge protection	Service port: ±6 kV for common mode Power connector: ±6 kV for both common mode and differential mode
<b>Certification and Regulatory Compliance</b>	
EMC	EN 55032 EN 61000-3-2 EN 61000-3-3 EN 55035 EN 300 386
Safety compliance	IEC 62368-1
Certification	CE, FCC

# Software Specifications

Model	RG-NBS5200-48GT4XS-UP
<b>Authentication</b>	
<b>RADIUS</b>	Yes
<b>802.1X authentication</b>	Yes
<b>Port-based 802.1X authentication</b>	Yes
<b>MAC address-based 802.1X authentication</b>	Yes
<b>Guest VLAN</b>	Yes
<b>Basic Configurations</b>	
<b>PoE watchdog</b>	Yes
<b>Online upgrade</b>	Yes
<b>Ethernet Switching</b>	
<b>Maximum number of VLANs</b>	4094
<b>Maximum number of MAC address entries</b>	16000
<b>Interface flow control</b>	Yes
<b>MAC address-based VLAN</b>	No
<b>IP subnet - based VLAN assignment</b>	No
<b>IEEE 802.1Q VLAN</b>	Yes
<b>Basic QinQ</b>	No
<b>VLAN configuration supported on LAN ports</b>	Yes
<b>Voice VLAN</b>	Yes
<b>STP (IEEE 802.1d)</b>	Yes
<b>RSTP (IEEE 802.1w)</b>	Yes
<b>MSTP (IEEE 802.1s)</b>	Yes
<b>LLDP</b>	Yes

## Software Specifications

Model	RG-NBS5200-48GT4XS-UP
LLDP-MED	Yes
Static MAC address	Yes
MAC address filtering	Yes
Static aggregation	Yes
LACP	Yes
Inbound or outbound rate limiting based on interface traffic	Yes
<b>Gateway Features</b>	
802.1p priority-based traffic classification	Yes
DSCP priority-based traffic classification	Yes
Egress queues based on 802.1p and DSCP priorities	Yes
SP	Yes
WRR	Yes
SP+WRR	Yes
Global QoS	Yes
<b>Interface</b>	
Jumbo frame length (MTU)	9216 bytes (interface configuration mode)
EEE	Yes
Cable test	Yes
<b>IP Routing</b>	
Maximum number of IPv4 static routes	500
IPv6 routing table size (network route)	500
Maximum number of IPv6 static routes	500

## Software Specifications

Model	RG-NBS5200-48GT4XS-UP
IPv4 static route	Yes
IPv6 static route	Yes
OSPFv2	Yes
OSPFv3	Yes
IP Service	
Maximum number of ARP entries	2000
IPv4 routing table size (host route)	12000
ARP	Yes
IPv4 ping	Yes
IPv4 traceroute	Yes
IPv6	Yes
ICMPv6	Yes
IPv6 ping	Yes
IPv6 traceroute	Yes
DNS client	Yes
DNSv6 client	Yes
DHCP relay	Yes
DHCP server	Yes
DHCP client	Yes
Multicast	
IGMPv1 snooping	Yes
IGMPv2 snooping	Yes
Basic IGMPv3 snooping	Yes
Full IGMPv3 snooping	Yes

# Software Specifications

Model	RG-NBS5200-48GT4XS-UP
IGMP filtering	Yes
IGMPv1, v2, and v3	Yes
<b>Network Management and Monitoring</b>	
Port mirroring	Yes
Mirroring	Yes
HTTP login	Yes
HTTPS login	Yes
RLOG	Yes
SON	Yes
Syslog	Yes
Client auto-discovery	Yes
PoE service failure	Yes
PoE power overload	Yes
SSH	No
Camera detection	Yes
Loop alarm	Yes
MAC address entries	Yes
IP address pool conflicts	Yes
Full ARP table	Yes
eWeb management	Yes
Ruijie Cloud management	Yes
Ruijie Reyee App management	Yes
SNMPv1, v2c, and v3	Yes
<b>Reliability</b>	

# Software Specifications

Model	RG-NBS5200-48GT4XS-UP
Number of VCS members	2
System dual backup	Yes (Only supported on devices with a factory-installed software version of ReeyeOS 2.320 or later)
Enabling dual backup for the partition Uboot (based on a single flash memory)	Yes
Load balancing	No
ERPS	Yes:Stand-alone No:Hot standby
<b>Security</b>	
Maximum number of ACEs	Number of ACEs in the inbound direction of an interface: 1900 Number of ACEs in the outbound direction of an interface: 0
Port isolation	Yes
Broadcast storm control	Yes
Multicast storm control	Yes
Unknown unicast storm control	Yes
DHCP snooping	Yes
Standard ACL	Yes
Extended MAC ACL	Yes
Extended IP ACL	Yes
IPv6 ACL	Yes
IP-MAC-port binding	Yes
ARP anti-spoofing	Yes
IP source guard	Yes
CPU Protection Policy	Yes
<b>System Performance Capacity</b>	
Recommended camera limit	200 W H265: 400 400 W H265: 200



## Package Contents

Model	RG-NBS5200-48GT4XS-UP
<b>Device</b>	
Device	1
<b>Accessories</b>	
Rubber pad	4
Power cord retention clip	1
Screw	8 M4 x 8 mm cross recessed countersunk head screws
Grounding cable	1 x 1 m (3.28 ft.)
Power cord	1 x 1.5 m (4.92 ft.)
Rack-mount bracket	2
<b>Manual</b>	
User Manual	1
Warranty Card	1

**Ruijie** | **Reyee**

 **R**edefine **y**our **e**asy **n**etwork



**Ruijie Networks Co., Ltd.**

Official Website: <https://Reyee.Ruijie.com>